

# datavideo

## PRODUCT GUIDE

### 2024



# CONTENTS

<b>6</b>	<b>PTZ CAMERAS</b>	<b>14</b>	<b>HDBASET</b>	<b>24</b>	<b>DIGITAL VIDEO SWITCHERS</b>	<b>36</b>	<b>STREAMING PLATFORM</b>
<b>NEW</b>	PTC-305		HBT-50		SHOWCAST 100		dvCloud
<b>NEW</b>	PTC-305T		HBT-30	<b>NEW</b>	SE-4000		BB-1 Kit
<b>NEW</b>	PTC-305NDI	<b>NEW</b>	HBT-18		SE-3200		
<b>NEW</b>	PTC-285		HBT-16	<b>NEW</b>	SE-2600	<b>38</b>	<b>ENCODERS</b>
<b>NEW</b>	PTC-285T		HBT-15	<b>NEW</b>	SE-2600 MU	<b>NEW</b>	NVS-36
<b>NEW</b>	PTC-285NDI		HBT-12		SE-1200MU		NVS-35
	PTC-280		HBT-11		RMC-260		NVS-33
	PTC-280NDI		HBT-6		SE-650		
<b>NEW</b>	PTC-145		HBT-5		SE-500HD	<b>39</b>	<b>DECODERS</b>
<b>NEW</b>	PTC-145T			<b>28</b>	<b>DIGITAL VIDEO SWITCHERS</b>	<b>NEW</b>	NVD-45
<b>NEW</b>	PTC-145NDI	<b>18</b>	<b>ROBOTIC PAN TILT HEAD</b>		<b>ACCESSORIES</b>	<b>NEW</b>	NVD-40
	PTC-140	<b>NEW</b>	PTR-15/ 15T		TPC-700		NVD-35 MARK II
	PTC-140T		PTR-10/ 10T MARK II		TPC-700P		
	PTC-140NDI		ZEK-2	<b>30</b>	<b>MOBILE VIDEO STUDIOS</b>	<b>40</b>	<b>RECORDERS</b>
<b>10</b>	<b>BLOCK CAMERAS</b>		PCB-1	<b>NEW</b>	MS-4000	<b>NEW</b>	HDR-90
	BC-50		WM-11		MS-3200		HDR-80
<b>NEW</b>	BC-15P	<b>20</b>	CM-10				HDR-2
<b>NEW</b>	BC-15PN			<b>32</b>	<b>4K MULTICAMERA</b>		RP-79
<b>NEW</b>	BC-15C				<b>PROCESSORS</b>	<b>42</b>	<b>MONITORS</b>
<b>NEW</b>	BC-15CN	<b>NEW</b>		<b>NEW</b>	KMU-300		TLM-170K/KM/KR
<b>12</b>	<b>CAMERA ACCESSORIES</b>				KMU-200		TLM-170F/FM/FR
	WM-1				KMU-100		TLM-170V/VM/VR
<b>13</b>	<b>CAMERA CONTROL</b>				RMC-185		TLM-700UHD
	RMC-300A	<b>22</b>	<b>ICAST</b>	<b>34</b>	<b>AUDIO TRACKING</b>		TLM-102
	RMC-180 MARK II	<b>NEW</b>	iCAST 10NDI	<b>NEW</b>	VoiceTrx 100		
<b>NEW</b>	RMC-2P		iCAST mini				

**44 AV CONVERTERS**

DAC-70  
DAC-60  
DAC-45  
DAC-9P 4K  
DAC-9P  
DAC-8P 4K  
DAC-8PA

**48 CONVERTER ACCESSORIES**

RMK-2

**49 DISTRIBUTION  
AMPLIFIERS**

VP-840  
VP-597  
VP-901

**50 UVC INTERFACE**

CAP-1  
CAP-2

**51 REPEATERS**

VP-929  
VP-737  
VP-634  
VP-633

**52 INTERCOM**

ITC-300  
ITC-200E  
ITC-100

**53 INTERCOM  
ACCESSORIES**

ITC-300SL  
ITC-100SL  
TD-3  
VP-300R  
HP-1  
HP-2A  
CB-3  
CB-4  
CB-68

**54 VIRTUAL STUDIO  
SYSTEMS**

TVS-3000  
TVS-2000A  
TVS-1000A

**56 CHROMAKEYER**

DVK-400

**57 CHROMAKEYER  
ACCESSORIES**

MAT-2  
MAT-5  
MAT-7  
TA-1  
TA-2  
TA-3

**58 AUDIO MIXING AND  
MANAGEMENT**

DAC-80  
DAC-90  
DAC-91  
AD-10  
AD-200  
AD-300

**60 TELEPROMPTERS**

**NEW** TP-900  
TP-800  
TP-700

**NEW** TP-650 MARK II

TP-500  
TP-300  
**NEW** TTL-100  
**NEW** FS-30  
WR-500

**64 HARD CASES**

HC-600  
HC-700  
HC-800  
**NEW** HC-800FS

**66 POWER DISTRIBUTION**

PD-6A  
PD-4A  
PD-2A  
DDC-4012H

**68 ALL IN ONE CABLES**

CB-22H  
CB-23H  
CB-24  
CB-30  
CB-31  
CB-47  
CB-61  
CB-62

# 3 YEAR WARRANTY



One of the core values of Datavideo is service. To make sure that every user of Datavideo equipment has a trustworthy experience we do our utmost best, day after day, year after year. We are confident that our products give you reliable service and we seal that confidence by a one year warranty period.

On most products, it's possible to extend that warranty for extra two years after registering. Please make sure to register your Datavideo product directly after purchasing for a 3-year warranty.



# Why Datavideo?

Datavideo is a global manufacturer of live video equipment for the broadcast and professional AV markets. What sets Datavideo apart from other video equipment manufacturer is that we specialize in end to end video production solutions for various vertical markets ranging from broadcast to worship to education, as well as, corporate and social media.

You will see in this product guide a wide range of products we offer for your live video production needs. Whether you are a novice video producer, who is learning live video production, or who's starting to learn about live production or a seasoned video professional, we have something you need in our product line.

We pride ourselves in making products that are high quality, but easy to use. It's a family of products that are designed to work together so that you never have to worry about the compatibility of your products. Our customers purchase our equipment with confidence in knowing that they are a solution to their video production needs.



**4K**  
ULTRA HD

**AI**  
AUTO TRACKING



### PTC-305

20x 4K Tracking Camera

- Supports up to 2160p50/60 via HDMI
- 20x Optical Zoom, 16x Digital zoom
- 1/1.8" CMOS
- Built-in H.264/H.265 dual streaming encoder
- Auto tracking object supported
- External audio input: 3.5mm mic in or line in
- Compatible with various controllers: DataVideo PTZ View Assist APP, RMC-300 and RMC-180 series.

# PTZ CAMERAS

Complete Range of Pan-Tilt-Zoom Cameras



## PTC-305T

20x 4K HDBaseT Tracking Camera



## PTC-305NDI

20x NDI Tracking 4K Camera



## PTC-285

12x 4K Tracking Camera



## PTC-285T

12x 4K HDBaseT Tracking Camera



## PTC-285NDI

12x NDI 4K Tracking Camera

- Supports up to 2160p50/60 via HDMI
- 20x Optical Zoom, 16x Digital zoom
- 1/1.8" CMOS
- Built-in H.264/H.265 dual streaming encoder
- HDBaseT technology
- Auto tracking object supported
- External audio input: 3.5mm mic in or line in
- Compatible with various controllers: Datavideo HS-1600T, RMC-300 and RMC-180 series.

- Supports up to 2160p50/60 via HDMI
- 20x Optical Zoom, 16x Digital Zoom
- 1/1.8" CMOS
- Built-in H.264/H.265 dual streaming encoder
- Auto tracking object supported
- External audio input: 3.5mm mic in or line in
- Compatible with various controllers: Datavideo PTZ View Assist APP, RMC-300 and RMC-180 series.
- NDI technology

- Supports up to 2160p50/60 via HDMI 4:2:2 YUV output
- 12x Optical Zoom, 16x Digital Zoom
- 1/2.8" CMOS
- Auto tracking object supported
- Built-in H.264/H.265 dual streaming encoder
- External audio input: 3.5mm mic in or line in
- Compatible with various controllers: Datavideo PTZ View Assist APP, RMC-300 and RMC-180 series.

- Supports up to 2160p50/60 via HDMI 4:2:2 YUV output
- 12x Optical Zoom, 16x Digital Zoom
- 1/2.8" CMOS
- Auto tracking object supported
- HDBaseT technology
- Built-in H.264/H.265 dual streaming encoder
- External audio input: 3.5mm mic in or line in
- Compatible with various controllers: Datavideo PTZ View Assist, RMC-300 and RMC-180 series.

- Supports up to 2160p50/60 via HDMI 4:2:2 YUV output
- 12x Optical Zoom, 16x Digital Zoom
- 1/2.8" CMOS
- Auto tracking object supported
- Built-in H.264/H.265 dual streaming encoder
- External audio input: 3.5mm mic in or line in
- Compatible with various controllers: Datavideo PTZ View Assist APP, RMC-300 and RMC-180 series.
- NDI technology



# PTZ CAMERAS

Complete Range of Pan-Tilt-Zoom Cameras



**PTC-280**  
12x 4K Camera

- Supports up to 2160p50/60 via HDMI
- 12x Optical Zoom, 16x Digital Zoom
- 1/2.5" CMOS
- Built-in H.264/H.265 dual streaming encoder
- 2160p and 1080p(3G-SDI) simultaneous video output
- External audio input: 3.5mm mic in or line in
- Compatible with various controllers: Datavideo PTZ View Assist APP, RMC-300 and RMC-180 series.



NDI®|HX



**PTC-280NDI**  
12x NDI 4K Camera

- Supports up to 2160p50/60 via HDMI
- 12x Optical Zoom, 16x Digital Zoom
- 1/2.5" CMOS
- Built-in H.264/H.265 dual streaming encoder
- 2160p and 1080p(3G-SDI) simultaneous video output
- External audio input: 3.5mm mic in or line in
- Compatible with various controllers: Datavideo PTZ View Assist APP, RMC-300 and RMC-180 series.
- NDI technology



**PTC-145**  
20x HD Tracking PTZ Camera

- 1/2.8 inch CMOS sensor.
- 1920x1080px Full HD resolution, 60fps
- 20x Optical Zoom, 8x Digital Zoom
- SDI/HDMI output H.264/H.265 streaming encoder
- Auto tracking object supported
- External audio input: 3.5mm audio line in
- Advanced 3D noise reduction technology
- Compatible with various controllers: Datavideo PTZ View Assist APP, RMC-300 and RMC-180 series.



# PTZ CAMERAS

Complete Range of Pan-Tilt-Zoom Cameras

**AT** HDBaseT



**PTC-145T**  
20x 1080P Camera

- 1/2.8 inch CMOS sensor.
- 1920x1080px Full HD resolution, 60fps
- 20x Optical Zoom, 8x Digital Zoom
- SDI/HDMI output H.264/H.265 streaming encoder
- HDBaseT technology
- Auto tracking object supported
- External audio input: 3.5mm line in
- Advanced 3D noise reduction technology
- Compatible with various controllers: Datavideo HS-1600T, RMC-300 and RMC-180 series.

**AT** NDI|HX3



**PTC-145NDI**  
20x 1080P Tracking Camera

- 1/2.8 inch CMOS sensor.
- 1920x1080px Full HD resolution, 60fps
- 20x Optical Zoom, 8x Digital Zoom
- SDI/HDMI output H.264/H.265 streaming encoder
- Auto tracking object supported
- External audio input: 3.5mm line in
- Advanced 3D noise reduction technology
- Compatible with various controllers: Datavideo PTZ View Assist APP, RMC-300 and RMC-180 series.
- NDI technology

HDBaseT



**PTC-140**  
20x 1080P Camera

- 1/2.8 inch CMOS sensor.
- 1920x1080px Full HD resolution, 60fps
- 20x Optical Zoom, 10x Digital Zoom
- SDI/HDMI output
- H.264/H.265 streaming encoder
- Advanced 2D/3D noise reduction technology
- Compatible with various controllers: Datavideo PTZ View Assist APP, RMC-300 and RMC-180 series.

NDI|HX



**PTC-140NDI**  
20x NDI PTZ Camera

- 1/2.8 inch CMOS sensor.
- 1920x1080px Full HD resolution, 60fps
- 20x Optical Zoom, 10x Digital Zoom
- NDI technology
- SDI/HDMI output
- H.264/H.265 streaming encoder
- Advanced 2D/3D noise reduction technology
- Compatible with various controllers: Datavideo PTZ View Assist APP, RMC-300 and RMC-180 series.



### **BC-50**

20x 1080P Camera with Streaming Encoder

- 1/2.7 inch CMOS sensor. 1080p Full HD resolution
- 20x optical zoom, 16x digital zoom
- 3G-SDI output
- H.264/H.265/Motion-JPEG compression and IP streaming through RJ-45 connection
- Web Interface

# BLOCK CAMERAS

State Of The Art Cameras



**BC-15P**  
4K POV Camera

- 1/2.3" CMOS sensor with 4K 50/60p output, perfect for low light environment video production
- Support streaming over RTMP, RTMPS, SRT
- App control and live Preview
- Power over Ethernet supported
- Small box design makes it flexible to be mounted anywhere.
- Swappable Fixed Lens Built-in
- Support two types of controls: physical buttons, and APP



NDI®|HX



**BC-15PN**  
4K POV NDI Camera

- 1/2.3" CMOS sensor with 4K 50/60p output, perfect for low light environment video production
- Support streaming over RTMP, RTMPS, SRT
- App control and live Preview
- Power over Ethernet supported
- Small box design makes it flexible to be mounted anywhere.
- Swappable Fixed Lens Built-in
- Support two types of controls: physical buttons, and APP
- NDI technology



**BC-15C**  
4K CS Mount POV Camera

- 1/2.3" CMOS sensor with 4K 50/60p output, perfect for low light environment video production
- Support streaming over RTMP, RTMPS, SRT
- App control and live Preview
- Power over Ethernet supported
- Standard CS mount interchangeable lens design
- Supports DC-IRIS function
- Small box design makes it flexible to be mounted anywhere.
- Support two types of controls: physical buttons, and APP



NDI®|HX

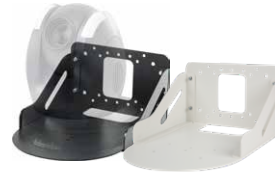


**BC-15CN**  
4K CS Mount POV NDI Camera

- 1/2.3" CMOS sensor with 4K 50/60p output, perfect for low light environment video production
- Support streaming over RTMP, RTMPS, SRT
- App control and live Preview
- Power over Ethernet supported
- Standard CS mount interchangeable lens design
- Supports DC-IRIS function
- Small box design makes it flexible to be mounted anywhere.
- Support two types of controls: physical buttons, and APP
- NDI technology



# PTZ CAMERA ACCESSORIES



## WM-1

Wall Mount for PTC Camera

- Can be positioned upside-down or rightside-up
- Made of steel for durability and endurance
- Compatible with all PTZ Cameras
- White color is also available



# CAMERA CONTROL

Ultimate Control From A Distance



**RMC-300A**  
Universal Remote Control Panel

- Control up to 24 PTR Robotic Pan Tilt Head, PTZ and block cameras by DVIP or up to 8 cameras by serial RS-422 transmission
- User friendly interface on 5-inch LCD touch panel
- Zoom knob and lock button for better camera control
- LCD displays GUI for Operability and Visibility



**RMC-180 MARK II**  
PTZ Camera Controller

- Remote control up to 4 Datavideo PTC/BC/PTR series cameras
- Control of Pan, Tilt and Zoom as well as Iris, Focus, Gain, and other functions
- Control via CAT5/CAT6 cable with RJ45 connectors
- Support shortcut keys for up to 4 position presets for each of your cameras



**RMC-2P**  
3 Camera Controller

- Working with the iCAST mini and TPC-700 via USB port
- Support DVIP control
- PoE (PD) IEEE 802.3af support
- Control up to 3 cameras
- Each camera saves up to 4 presets
- 3-axis joystick for pan/tilt/zoom control



# HDBaseT

Make It Single Wire



**HBT-50**  
HDBaseT Receiver Box

- Supply power, video signal, and camera control up to 4 devices up to 100 meters distance.
- Support simultaneously outputs HDMI, SDI, RS-422 and IP control signals.
- HBT-50 simultaneously transmits SDI (up to 1080p60) and HDMI (up to 1080p60) as well as camera control.
- Single cable video transmission by HDBaseT technology



**HBT-30**  
HDBaseT Receiver Box

- Support up to Ultra HD 4K50/60 video formats
- Single cable video transmission by HDBaseT technology
- Long distance transmission up to 100m at 4K50/60 using Cat 6a cable
- Power to 3 cameras by PoE technology
- Supports DVIP/RS-422/232 remote control protocol
- 3 HDMI 2.0 Video outputs
- Supports HDMI Deep Color & full 3D & 4K50/60



**HBT-18**  
4K HDBaseT Receiver  
Box

- Extend 4K50/59.94/60 video transmission up to 100m from PTR-15T.
- Transmit video, audio, DVIP Ethernet control, RS-422/232 and PoE by a single Cat. 6A cable
- Support full power of PTR-15T over POE++
- Carry everything in one ethernet cable
- Selectable control protocol: RS-232, RS-422 and DVIP



**HBT-16**  
HDBaseT Receiver Box

- Extend 4K50/59.94/60 video transmission up to 100m from HBT-15 Transmitter Box.
- Transmit video, audio, DVIP Ethernet control, RS-422/232 and PoE by a single Cat. 6A cable
- PoE Power supply 56V input from HBT-16 Receiver side.
- Supports DVIP Control Protocol
- Supports RS-422/232 Control



**HBT-15**  
HDBaseT Transmitter Box

- Extend 4K50/59.94/60 video transmission up to 100m from HBT-15 Transmitter Box to HBT-16 Receiver Box.
- Transmit video, audio, DVIP Ethernet control, RS-422/232 and PoE by a single Cat. 6A cable
- 12V 30W DC output at HBT-15 Transmitter Box side.
- Supports DVIP Control Protocol





# HDBaseT

Make It Single Wire



**HBT-12**  
HDBaseT Receiver Box

- Support upto 4K 25/30p
- Support 60W POE
- Long distance 4K solution
- Carry everything in one ethernet cable
- Selectable control protocol: RS-232, RS-422 and DVIP



**HBT-11**  
HDBaseT Receiver Box

- Extend 4K video transmission up to 70m
- Extend Full HD video transmission up to 100m
- Receive video, audio, DVIP
- Ethernet control, RS-422/232 and POE from a single Cat.5e/6/6a/7 cable
- Supports HDMI as signal output



**HBT-6**  
HDBaseT Receiver Box

- Supports up to 4K 25/30p with embedded multi-channel audio
- Transmit up to 60m at 1080p or 35m at 4K
- Supports HDMI Deep Color & full 3D & 4K@30
- Supports control over RS-232/RS-422
- Supports default EDID and EDID learning from the display
- HDCP Compliant



**HBT-5**  
HDBaseT Transmitter Box

- Supports up to 4K 25/30p with embedded multi-channel audio
- Transmit up to 60m at 1080p or 35m at 4K
- Supports HDMI Deep Color & full 3D & 4K@30
- Supports control over RS-232/RS-422
- Supports default EDID and EDID learning from the display
- HDCP Compliant



**4K**  
ULTRA HD



**NEW**

**PTR-15/15T**  
4K Robotic Pan  
Tilt Head

- Various interfaces: SDI, HDMI, RS-232, RS-422, DVIP/HDBaseT, Tally, LANC
- 12G-SDI and HDMI2.0 supported
- Timecode/Genlock interface built-in
- Multiple choices of controllers: RMC-180 MARK II, RMC-300A
- Tally light built-in
- D-tap connector for DC output
- Selectable DC voltage output for different cameras
- Support optional Datavideo ZEK-2 to detect and read out the Zoom position of cameras on top
- Control Sony, Panasonic, Canon, JVC cameras
- Support HDBaseT technology (PTR-15T)

# ROBOTIC PAN TILT HEAD

Turn Your Camera Into a Robotic



**PTR-10/10T MARK II**  
Robotic Pan  
Tilt Head

- Turn camcorder into PTZ
- Multiple signal interface: SDI, HDMI, RS-232, RS-422, DVIP/HDBaseT, Tally, LANC
- Diversified controller options: RMC-180, RMC-300, and HS-1600T series
- Control of Pan, Tilt, Zoom
- Support optional Datavideo ZEK-2 to detect and read out the Zoom position of cameras on top
- Max. Camera Weight 4kg
- Support HDBaseT technology (PTR-10T MARK II)



**ZEK-2**  
Zoom Control Kit for Tilta  
Nucleus-M Motor

- Active Zoom Driver Kit
- Motorized external Zoom control
- Pre-store and Re-call preset positions for Pan/Tilt/Zoom
- Special design for Lumix BGH-1 with M4/3 manual Zoom lenses
- Convert the manual Zoom camera into a Robotic Pan Tilt Zoom remote control camera



**PCB-1**  
Camera Control Box

- Support to control Panasonic 2-ports remote cameras
- Compatible with RMC-180 MARK II, RMC-300A and IR remote control, can control Zoom, Focus, IRIS of Panasonic camera.
- Small size design
- Low power consumption. PCB-1 can be powered from the PTR-10/15 series device.



**WM-11**  
Professional Wall Mount for Robotic  
Pan Tilt Head

- Designed for Datavideo Robotic Pan Tilt Head including PTR-10/15
- Robust and durable setup
- With strong metal expansion bolts and three bubble level meters
- Can be mounted regularly or upside-down and support up to 50kg load



**CM-10**  
Professional Ceiling Mount for  
Robotic Pan Tilt Head

- Designed for Datavideo Robotic Pan Tilt Head including PTR-10/15
- Robust and durable setup
- Ceiling Mount with Long Tilt Arm included



sochi  
2016 russia





# HAND CARRY PORTABLE STUDIOS

The World's Most Compact Video Studio

**4K**  
ULTRA HD



**HS-4000**  
8 Input 4K Mobile Studio

- A complete professional broadcasting solution for switching, recording, streaming and monitoring
- Supports 8 channels UHD 4K60/50p inputs resolution
- 17" monitor with UHD 4K (3840 x 2160) LCD display
- 4K Streaming and backup recording via SD card
- Integrated 5" touchscreen display for easy operation
- 4 x Upstream keys , 2 x DSK keys and 2 x PIP



**HS-3200**  
12 Input HD Mobile Studio

- A complete professional broadcasting solution for switching, recording, streaming and monitoring
- Supports 12 HD inputs in full 1080p resolution
- 4x upstream keys, 2x DSK and 2x independent logos or dual chroma keyer
- Built-in animated stinger transitions and virtual set backgrounds
- Professional Audio-to-Video Synchronization
- Support TPC-700 Touch Panel Controller for access memory presets, Chromakey, flex source, PIP window setting and easily assign AUX outputs



**HS-1600T MARK II**  
4 Input HDBaseT Mobile Studio

- Built-in HDBaseT technology allows you to run power, uncompressed video, camera control, and tally over a single CAT6 ("network") cable
- Built-in H.264 dual streaming encoder and recorder
- Built-in camera controller with a joystick and preset buttons



**HS-1300**  
6 Input HD Mobile Studio

- A complete solution for switching, recording, streaming and monitoring
- 4 SDI and 2 HDMI inputs, 3 HDMI outputs
- H.264 recorder and streaming encoder for seamless online broadcasting



# ICAST

## Presentation Switchers

NDI®|HX



**iCAST 10NDI**  
5-Channel All-in-one  
Presentation Switcher

- Switching the PGM via front panel pushing buttons.
- Best partner with TPC-700/P Touch Panel Controller to get easy control by finger
- Support IP switcher to get the video source from worldwide
- Real-time recording and streaming status on 2" LCD
- 6 channel ISO recording (channel 1-5, PGM)
- Different bitrate settings for streaming and recording
- H.264 encode
- External audio input for audio mix.
- Decode up to 3 NDI signals



**iCAST mini**  
4K Dual Channel Presentation  
Switcher

- Support up to 4K30/29.97/25 video formats
- 7" Touch screen for easy operating and monitoring
- Capture camera position picture to be Image Key
- Remote controlling of camera options
- 2 HDMI 1.4 Video Input + 1 HDMI 1.4 PGM Output
- UVC output
- Ethernet RJ45 with integrated PoE
- Audio XLR (6.3mm) Combo Socket can be MIC input or Line audio input
- 1 x stereo RCA audio output
- Supports Audio Mixer and Audio delay
- Control by DVIP, RS-422 and RS-232







# DIGITAL VIDEO SWITCHERS

**4K**  
ULTRA HD



**SHOWCAST 100**  
4K ShowCast Studio

- Support up to Ultra HD 4K/60 video formats
- Large 14" LCD Touch screen for operating and monitoring
- Support remote controlling of multiple camera options such as pan, tilt, zoom, iris, focus, shutter, and white balance
- The built-in H.264 encoder can instantly live streaming to any live broadcast platforms.
- Live-Streaming Vertical or Horizontal Video
- Built-in H.264 recorder for SD cards

**4K**  
ULTRA HD



**SE-4000**  
4K 8-Channel Digital Video Switcher

- Supports 8 channels UHD 4K60/50p input and output
- Scaling on each available input
- Integrated 5" touchscreen display to adjust all the setting without any laptop or app needed
- Support Lumakey, Chromakey, Linear Key and Downstream Key
- 4 x Upstream keyers , 2 x DSK keyers and 2 x 3D borders PIP
- Professional Audio-to-Video Synchronization
- Support Still image thumbnails to capture important moments of your program



**SE-3200**  
12 Input 1080p60 Switcher

- Supports 12 HD inputs in full 1080p resolution
- 4x upstream keyers, 2x DSK and 2x independent logos or dual chroma keyer
- Built-in animated stinger transitions and virtual set backgrounds
- Professional Audio-to-Video Synchronization
- Support TPC-700 Touch Panel Controller for access memory presets, Chromakey, flex source, PIP window setting and easily assign AUX outputs



**SE-2600**  
8-channel HD Video Switcher

- 8 channels input and 6 outputs
- 4 x Upstream Keyers and 2 x Downstream Keyers
- 4 x Picture-in-Picture
- Built-in title overlay system
- 2 Logo insertion (Animation logo, X/Y size)
- Support Crosspoint assignment (XPT)
- Tally output



**SE-2600MU**  
8-channel HD Video Switcher-Rackmount

- 8 channels input and 6 outputs
- 4 x Upstream Keyers and 2 x Downstream Keyers
- 4 x Picture-in-Picture
- Built-in title overlay system
- 2 Logo insertion (Animation logo, X/Y size)
- Support Crosspoint assignment (XPT)
- Tally output



datavideo®

SE-1200MU HD 6-CH DIGITAL VIDEO SWITCHER



POWER

# DIGITAL VIDEO SWITCHERS



**SE-1200MU**  
6 Input HD Switcher

- Supports 6 HD inputs
- 2x DSK and 2x PiP with dual chromakeyer
- Switch over IP, external control or RMC-260 control panel
- Built-in animated stinger transitions and virtual set backgrounds



**RMC-260**  
SE-1200MU Remote  
Controller

- A switcher style keyboard for controlling the SE-1200MU
- RS-232 interface for communication between RMC-260 and SE-1200MU



**SE-650**  
4 Input HD Switcher  
2 SDI and 2 HDMI Input

- 4 channel HD video switcher with audio mixer
- 1 SDI and 2 HDMI output channels
- Built-in animated stinger transitions and virtual set backgrounds



**SE-500HD**  
4 Input 1080p60 Switcher 4 HDMI  
Input

- 4 channel video switcher with scalable inputs and outputs
- Built-in video scaler for mixed resolution/standards inputs up to 1080p
- Support virtual video switching





# DIGITAL VIDEO SWITCHERS ACCESSORIES



**TPC-700**  
Touch Panel Controller



**TPC-700P**  
Touch Panel Controller  
with PoE

- Universal touch panel controller for:
  - iCAST 10NDI
  - HS/SE-3200
  - DVK-400
  - VGB-2000
  - VGB-4000

- Universal touch panel controller for:
  - iCAST 10NDI
  - HS/SE-3200
  - DVK-400
  - VGB-2000
  - VGB-4000



Control for OBV/MS/HS/SE-3200 Switcher:

- Store and recall memory presets, Chromakey, and flex source settings
- PIP window sizing and position
- Easily assign AUX outputs



Control for DVK-400 4K Chromakey:

- Support Aux Lumakey (Logo) on and off
- Provide Layer Swapping in front of the animation or behind the virtual objects, presenting the perspective effect like real.



Control for VGB-2000/4000 Professional presentation system:

- Provide presenter switch the scenes very easy
- Including full screen of PowerPoint contents, video or a virtual studio scene, add creativity and dynamics to her presentation(VGB-2000)
- Provide Layer Swapping in front of the animation or behind the virtual (VGB-4000)



Control for iCAST 10NDI 5-Channel All-in-one Streaming Switcher :

- Provide presenter switch the scenes very easy
- Store and recall memory presets
- PIP window sizing and position
- Recording and audio quick setting



# MOBILE VIDEO STUDIOS

Video Production On The Road



## MS-4000

4K 8 Input Flyaway Studio

- Supports up to 8 4K50/60 inputs in a variety of configurations
- Supports 4K professional ProRes Video Recorder
- Supports 4K Streaming and backup recording via SD card
- Professional waveform and vector monitor with real 4K 17.3" panel
- Standard fitted with digital 8 channel intercom
- Flyaway case design for portability (+/- 73kg depending on configuration)



## MS-3200

HD 12 Input Flyaway Studio

- Supports 12 HD inputs in a variety of configurations
- Supports HD professional Video Recorder
- Supports Streaming and backup recording via SD card
- Professional waveform and vector monitor 17.3" panel
- Standard fitted with 8 channel intercom
- Flyaway case design for portability (+/- 60kgs depending on configuration)





# 4K MULTICAMERA PROCESSORS



**KMU-300**  
4K Multi-Channel ROI  
Streaming Switcher

- 2-in-1 switching modes for 16x9 or vertical video production
- Size and switch regions of interest from display
- Easily switching between cutouts by touch display
- 16:9 and 9:16 video streaming via built-in encoder
- H.264 recording built-in
- Cutouts selection by a joystick
- Four channel audio mixer and audio embedding



**KMU-200**  
4K Multi-Channel Streaming  
Switcher

- 2 in 1 switching modes for 16x9 or vertical video production
- Size and switch regions of interest from display
- Easily switching between cutouts by touch display
- 16:9 and 9:16 streaming via built-in encoder
- H.264 recording built-in
- Cutouts selection by a joystick
- Four channel audio mixer and audio embedding



**KMU-100**  
2 Input 4K Virtual Multicamera  
Processor

- Generates up to eight cutouts of one or two 4K inputs
- 12G-SDI, Quad 3G-SDI or HDMI 2.0 inputs
- 8 channel switcher to switch between cutouts
- Create speed sensitive motion paths
- Control through RMC-185 hardware controller
- Optional PC control software



**RMC-185**  
KMU-100 Remote Controller

- Provides easy and intuitive control of the KMU-100
- Easily pan, tilt and zoom using the joystick to create the user defined windows on the 4K signal



# VOICE TRACKING CONTROL



## **VoiceTrx100**

Voice Tracking Control Interface

- Supports a range of switcher hardware
- Clean switching or PIP/PBP
- CG support, recording and streaming depending on the chosen switcher
- Logic block architecture gives the integrator the power to customise behaviour without the complexity of programming a third-party control system.
- One fits all solution





# STREAMING PLATFORM



**dvCloud**  
dvCloud Live Streaming Platform

- Stream up to 5 Live sources to 25 platforms simultaneously
- Easily send SDI or HDMI over the internet with Datavideo NVS encoders and NVD decoders
- Automatically record to the cloud
- Supports the SRT (Secure Reliable Transport) protocol for low latency, reliable streaming
- Monitor all inputs and outputs from a single statistics view



**BB-1 Kit**  
dvCloud Remote Device Control

- Control various IP controllable device over the internet including Datavideo PTZ cameras, and switchers
- Enables numerous remote production workflows
- Each pair of BB-1 enables the control of five devices at each site
- A single dvCloud Professional subscription supports six BB-1s
- Firewall friendly, no IP knowledge required
- Supports low latency, reliable streaming via SRT



# ENCODERS



**NVS-36**  
4K Dual Streaming Encoder

- H.264/H.265 streaming and recording simultaneously.
- File System: exFAT, for continuous recording without file size limitation.
- Selectable audio output: embedded audio/external audio/mixed audio
- Streaming videos in RTMP(S), RTSP, SRT and TS formats
- LED indicator showing the status or the detections.
- Dual streams to CDNs



**NVS-35**  
Dual Stream H.264 Video Encoder

- 1x SDI / HDMI input
- Support dual streaming to different platforms.
- Support vertical streaming.
- Streaming videos in RTMP(S), RTSP, SRT and TS formats
- Record on SD card, easy to store
- XLR and RCA audio inputs are provided.
- Supports FAT32/exFAT/NTFS file system for continuously recording



**NVS-33**  
H.264 Video Encoder SDI/HDMI

- 1x SDI / HDMI input
- Supports different bitrates for recording and streaming simultaneously
- Streaming videos in RTMP(S), RTSP, SRT and TS formats
- Record on SD card, easy to store
- Supports FAT/exFAT/NTFS file system

# DECODERS



**NVD-45**  
4K SDI IP Video Decoder

- Decodes video from Datavideo encoders, YouTube and Vimeo
- STB functionality for use as a set-top-box
- Decodes all common streaming protocols including SRT
- Output video up to 3840x2160p 50/60
- Support Unicast and Multicast
- Seamless integration with Datavideo dvCloud streaming platform



**NVD-40**  
4K HDMI IP Video Decoder

- Decodes video from Datavideo encoders, YouTube and Vimeo
- STB functionality for use as a set-top-box
- Decodes all common streaming protocols including SRT
- Output video up to 3840x2160p 50/60
- Support Unicast and Multicast
- Seamless integration with Datavideo dvCloud streaming platform



**NVD-35 MARK II**  
SDI IP Video Decoder

- Decodes video from Datavideo encoders, Youtube and Vimeo
- STB functionality for use as a set-top-box
- Decodes all common streaming protocols including SRT
- Seamless integration with Datavideo dvCloud streaming platform





# RECORDERS

Capture Your Creativity



**HDR-90**  
ProRes 4K Dual Disk Recorder  
1U Rackmountable

- Large 5" LCD Touch screen for operating and monitoring
- Support ISO recording of four HD videos and playback
- 12G/3G/HD-SDI and 4K/HD-HDMI input, output with embedded audio
- A recorder that can be operated like a 4-channel video switcher
- Records on two 2.5" SSDs
- Supports close caption



**HDR-80**  
ProRes 4K Dual Disk Recorder  
Desktop

- Large 5" LCD Touch screen for operating and monitoring
- Support ISO recording of four HD videos and playback
- 12G/3G/HD-SDI and 4K/HD-HDMI input, output with embedded audio
- A recorder that can be operated like a 4-channel video switcher
- Records on two 2.5" SSDs
- Supports close caption



**HDR-2**  
4K Digital Recorder

- Supports up to 4K 50/60 resolution recording to SD card
- HDMI 2.0 input, output and loop-through output
- 2"LCD for menu setup and monitoring
- Support H.265/H.264 recording
- XLR audio input x2 and RCA input x 2
- Redundant Power recorder (UPS)
- Supports DVIP, RS-422/RS-232 and GPI remote control



**RP-79**  
HDR-80 Rack Tray

- Special designed to accommodate two HDR-80 recorders
- Providing dual machine operation in OB Vans or studios.



# MONITORS

Broadcast Quality LCD Monitors



**TLM-170K/KM/KR**  
17" ScopeView Production Monitor

- DCI 4K/60p and UHD 4K/60p signals on input and output
- 17" monitor with UHD 4K (3840 x 2160) LCD display
- Support column (YRGB peak), time code, waveform, vector scope & audio level meter, peaking focus assist, zoom, pix to pix, underscan, check field, etc
- 12G-SDI video input with loop-through output
- HDMI 4K input with loop-through output
- DSLR Scaling for Full Screen Viewing
- Time Code Display (LTC/VITC)



**TLM-170F/FM/FR**  
17" ScopeView Production Monitor

- DCI 4K/60p and UHD 4K/60p signals on input and output
- 17" monitor with FHD (1920 x 1080) LCD display
- Support column (YRGB peak), time code, waveform, vector scope & audio level meter, peaking focus assist, zoom, pix to pix, underscan, check field, etc
- 12G-SDI video input with loop-through output
- HDMI 4K input with loop-through output
- DSLR Scaling for Full Screen Viewing



**TLM-170V/VM/VR**  
17" ScopeView Monitor

- 17" Full HD 1920x1080 panel resolution
- 1 x 3G/HD/SD-SDI 2 x HDMI Inputs
- Support column (YRGB peak), waveform, vector scope & audio level meter, peaking, zoom
- SDI, HDMI cross conversion



**TLM-700UHD**  
7" 4K Monitor

- 1920x1200 panel resolution
- UHD 50/60P HDMI input and loop out power available by batteries
- Support focus assist, false color, histogram, exposure, zoom, pixel to pixel, under-scan, check field
- Can be powered by batteries



**TLM-102**  
Dual 10" Monitor

- 1280x800 panel resolution
- 1 x 3G/HD/SD-SDI, 1 x HDMI inputs and loop outs
- SDI, HDMI cross conversion





# AV CONVERTERS

Signal To Signal Perfection



**DAC-70**  
Up Down Cross

- Convert video signals from VGA, HDMI, SDI with Audio input to 3G/HD/SD SDI and HDMI outputs
- 3G-SDI technology with full 10 bit processing and low SDI jitter
- RCA audio embedding



**DAC-60**  
SDI to VGA

- Supports 3G/HD/SD-SDI to VGA conversion
- SDI loop through is unaffected by the adjustments to the VGA signal



**DAC-45**  
4K Up Down Cross

- Supports VGA/HDMI/SDI to 4K HDMI/3G-SDI multi-format up/down/cross conversion
- Built-in De-interlacer and Interlacer (I/P conversion)



# AV CONVERTERS

Signal To Signal Perfection



**DAC-9P 4K**  
4K HDMI to SDI

- Supports up to DCI 4K (4096 x 2160) and UHD 4K (3840 x 2160)
- Supports 2x 12G-SDI output
- HDMI 2.0 input and loop-thru output
- Supports Re-Clocking
- Provides additional 2-Channel RCA analog audio embedded



**DAC-9P**  
HDMI to SDI

- Supports HDMI to 3G/HD/SD-SDI conversion
- Audio can be embedded within SDI output signal
- Supports YUV and RGB color space



**DAC-8P 4K**  
4K SDI to HDMI

- Supports up to DCI 4K (4096 x 2160) and UHD 4K (3840 x 2160)
- 12G-SDI input and loop-thru output
- Supports HDMI 2.0 to 18 Gbps Video bandwidth
- Supports Re-Clocking
- Provides Additional 2-Channel RCA Analog Audio Output



**DAC-8PA**  
SDI to HDMI

- Supports 3G/HD/ SD-SDI to HDMI conversion
- Loop through SDI output with embedded audio
- Supports YUV and RGB color space

# CONVERTER ACCESSORIES



## **RMK-2**

2U Rackmount Kit for DAC

- Rackmount Frame to hold up to 8 DAC Converters
- Built-in power distributor for up to 8 converters



# DISTRIBUTION AMPLIFIERS



**VP-840**  
1x4 4K HDMI Splitter

- 1 x HDMI input and 4x HDMI outputs
- Supports 4K2K@60 4:4:4 8bits
- Supports High Dynamic Range, which is 4K2K@60 4:2:0 10bits
- HDMI 2.0a compliant, HDCP 2.2 and 1.4 compliant
- Supports Dolby Digital, DTS-HD and Dolby TrueHD audio



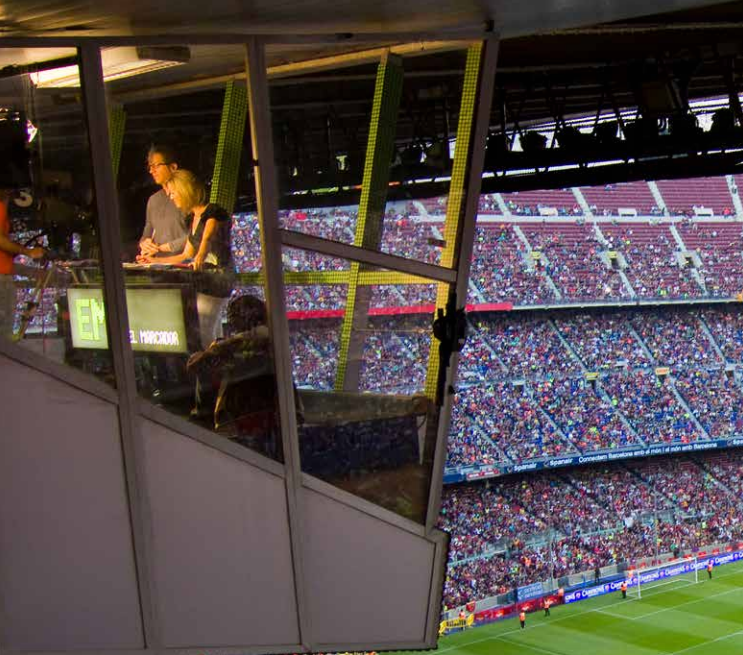
**VP-597**  
2x6 3G-SDI Splitter

- 2 x 3G/HD/SD-SDI inputs
- 6 x 3G/HD/SD-SDI distribution outputs
- Supports embedded audio SDI
- Two input video can be controlled by A/B switch or GPI remote



**VP-901**  
SDI Distribution Amplifier

- 1 x SDI input, 8x SDI outputs
- Supports up to 3840x2160p
- Signal auto detection and re-clocking
- Useful applications in digital signage, indoor, and outdoor studios
- LED indication of signal lock and video rate



# UVC INTERFACE



**CAP-1**  
SDI to USB 3.0 Capture Box



**CAP-2**  
HDMI to USB 3.0 Capture Box

- 1080p60 video transmission over USB 3.0
- 1 x SDI video input
- 3G-SDI audio and video capture
- Connect to video conferencing
- Plug and play operations with video format (resolution and frame rate) auto-detection capability

- 1080p60 video transmission over USB 3.0
- 1 x HDMI video input
- HDMI 1.4 audio and video capture
- H.264 video recording format (software compression)
- Plug and play operations with video format (resolution and frame rate) auto-detection capability
- Connect to video conferencing



# REPEATERS

**4K**  
ULTRAHD



**VP-929**  
4K HDMI Repeater

- Easily extend up to 4K HDMI signal to another 10m in up to 4K resolution and up to 15 meters in HD resolution.
- Powered by HDMI signal or external USB power supply
- Secure HDMI cables with regular zip ties
- Cost effective way of extending HDMI signals



**VP-737**  
Composite Signal Repeater

- Wired composite video transmission as far as 200 meters
- Completely adaptive - quick, easy installation and setup, no configuration required
- Cat5e extension design make use of existing Cat5e or better wiring infrastructure



**VP-634**  
100m SDI Repeater  
(Unpowered)

- Supports 3G/HD/SD-SDI
- Each extended SDI signal up to 200m, allowing runs of up to 1000m
- Requires VP-633 in chain to supply power



**VP-633**  
100m SDI Repeater  
(Powered)

- Supports 3G/HD/SD-SDI
- Each extended SDI signal up to 200m, allowing runs of up to 1000m

# INTERCOM



**ITC-300**  
Digital IP intercom system

- 1U Rackmountable 8 channels Intercom System
- Transmits two ways talk, and tally over single CAT cable
- Communication distance up to 100 meters
- Selectable channel talk, broadcast to all or mute
- Bi-colour tally light indicator



**ITC-200E**  
Intercom Expansion Unit

- Additional 8 channels to ITC-100



**ITC-100**  
Intercom System

- 1U Rackmountable 8 channels Intercom System
- Communication distance up to 200 meters
- Selectable channel talk, broadcast to all or mute



# INTERCOM ACCESSORIES

ITC-300 only



**ITC-300SL**  
Digital Intercom Belt Pack



**VP-300R**  
Intercom Repeater



**CB-68**  
70m 2-in-1 Cable

ITC-100 only



**ITC-100SL**  
Belt Pack



**CB-3**  
20m 5-Pin Intercom  
Cable



**CB-4**  
50m 5-Pin Intercom  
Cable

ITC-100/ 300 sharable



**TD-3**  
Tally Light



**HP-1**  
Single-Side Headset



**HP-2A**  
Dual-Side Headset  
with 3.5mm Jack



# VIRTUAL STUDIO SYSTEMS

**4K**  
ULTRA HD



**TVS-3000**  
4K AR 3D  
Tracking & Trackless

- 3D tracking through camera crane, complete true 3D virtual studio production
- 2 channels 4K 25/30P
- Standard 4 channels HD optional expandability to 8 channels production
- Supports NDI technology
- Multi-channel streaming and decoding
- Professional graphic layout function
- Built-in software audio mixer



**TVS-2000A**  
3D 2 Input 3G-SDI  
Tracking & Trackless

- Supports Tracking and Trackless Virtual Studio simultaneously
- Supports Datavideo PTZ camera as a tracking camera
- Supports 2x SDI and 1x HDMI video input/output
- 100 free virtual sets included



**TVS-1000A**  
2D 1 Input HDMI  
Trackless

- Trackless Virtual Technology
- Provides real simulation virtual studio with single button.
- Supports 1x HDMI camera input and 1x HDMI aux input
- Supports 2x HDMI output
- Five in One System: Virtual Studio, Switcher, Character Generator, Recorder and Web Streaming
- 200 free virtual sets included



# CHROMAKEYER



**DVK-400**  
4K Chromakey

- Real-time chromakeyer with 4:4:4 10-bit internal process
- Advanced algorithm can present transparency, smoke, reflection and shadow in detail
- Easy spill suppression with color enhancement
- Program and Preview with mirror option
- Supports up to 4K by free firmware upgrade in the future
- Background supports 1x HDMI



# CHROMAKEYER ACCESSORIES



**MAT-2**  
Green Color Plastic Mat  
1.8M x 27M  
Floor Use



**MAT-5**  
Green Color Plastic Mat  
1.8M x 54M  
Wall use



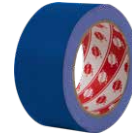
**MAT-7**  
Blue Color Plastic Mat  
1.8M x 54M  
Wall use



**TA-1**  
Green Color Tape  
48mm x 25M



**TA-2**  
Green Color Tape  
96mm x 25M



**TA-3**  
Blue Color Tape  
48mm x 18.3M



# AUDIO MIXING AND MANAGEMENT



**DAC-90**  
SDI Audio De-embedder

- De-Embed Audio from SDI Signal
- Auto detects video format, support up to 1080P 50/60
- Assignable De-embedded audio signal
- Audio level indicator display



**DAC-91**  
SDI Audio Embedder

- Auto detects SD and HD signals
- Auto sets compatible formats to embed external sound sources to SDI output
- 4 x Analogue Audio inputs (Mini XLR x 2, RCA x 2)

# AUDIO MIXING AND MANAGEMENT



**AD-10**  
Audio Delay Box

- Audio & video synchronization
- Delay up to 400 ms
- Power by external USB power supply
- Audio level control to make up or add gain
- Switchable for microphone input or audio line input
- Switchable condenser / dynamic microphone
- Stereo RCA output connectors for wide compatibility
- Simple controls and LED indicators
- Compact and lightweight design



**AD-200**  
Audio Delay Box  
with Level Adjustment

- Two in one: Audio Mixer and delay
- Support up to 3 sec audio delay adjustment for each input channel
- 6-CH Audio mixer and matrix router to 4-CH audio outputs



**AD-300**  
Audio Delay Box

- 5 Channel audio mixer and matrix router to 2 channel audio outputs
- Support up to 3sec audio delay adjustment for each input channel
- Built-in balanced or unbalanced audio conversion
- Audio Processors: Compressors, Limiters, Gate, Expander, Filter and Equalizer
- Audio level adjustment of each input
- Audio gain control



# TELEPROMPTERS



**TP-900**  
Presentation Prompter  
for PTZ Camera

- Designed Specifically for PTZ Cameras
- Unique and innovative design, suitable for any PTZ camera
- Built in Teleprompter application
- Easy control and monitoring via Ethernet
- Synchronize multiple units via HDMI or IP
- Powerful rich text editor and Real Time Editing
- P2P Interview Configuration



**TP-800**  
Portable Conference  
Teleprompter

- Built into a ruggedized carry case
- Completely freestanding and standalone
- dv prompter Plus software built in
- Can be powered by the mains or a V-Lock battery
- HDMI input and output can be used to connect multiple TP-800s together
- HDMI output can be used to drive external displays
- Can be monitored and controlled via IP



**TP-700**  
Presentation Prompter  
for ENG Camera

- 15" LCD screen with dvPrompter Plus software built in
- Mount cameras up to ENG size to the rear rail or use freestanding in front of any camera
- Can be mounted to any tripod or light stand in freestanding configuration
- Supports up to 19" talent monitors via VESA 75 and 100 mount
- Supports mains and V-Lock battery power



**TP-650 MARK II**  
Large Screen Prompter Kit  
for ENG Cameras

- Mount cameras up to ENG size to the rear rail or use freestanding in front of any camera
- Can be mounted to any tripod or light stand in freestanding configuration





# TELEPROMPTERS



**TP-500**  
DSLR Prompter

- Apply 60/40 beam glass
- Compatible with DSLR camera
- Suitable for tablet up to 11.6"
- Can be mounted to any standard tripod
- iOS and Android App available
- Optional bluetooth and wired remote control
- Quick and simple assembly



**TP-300**  
Tablet Prompter

- Apply 60/40 beam glass
- Compatible with mid-size camera and camcorder
- Suitable for tablet up to 11.6"
- Can be mounted to any standard tripod
- iOS and Android App available
- Optional bluetooth and wired remote control
- Quick and simple assembly



**TTL-100**  
Through the Lens Kit

- Turns the TLM-700K / TLM-700UHD into a "through the lens" monitor
- Allows the talent to see themselves while looking directly into the centre of the camera lens
- Used with web conferencing software for remote interviews, allows you to see your guest while looking directly into the centre of the camera lens
- Can be mounted to all tripods and light stands
- Features a 1/4 mounting rail for box cameras and web cameras, can also be used freestanding



**FS-30**  
Foot Switch

- Compatible with the Datavideo TP-800 Teleprompters
- Connects via USB and offers three pedals with independent functions
- Supports control of both scrolling text and slides.
- Non-contact photoelectric sensors for near silent operation



**WR-500**  
Bluetooth Teleprompter Remote Control

- Bluetooth wireless remote for teleprompters
- Compatible with Apple and Android tablets



# HARD CASES



**HC-600**  
Hard Case for TP-600/650  
Teleprompter Kit



**HC-700**  
Water, Dust and Crush Resistant  
Case - Trolley Style (XL)



**HC-800**  
Water, Dust and Crush Resistant  
Case - Trolley Style (XXL)



**HC-800FS**  
Water, Dust and Crush Resistant  
Case with foam compatible with  
PTC-280, PTC-140T and PTC-150TL  
- Trolley Style (XXL)





# POWER DISTRIBUTION



**PD-6A**  
Camera Power Center

- Automatically adjusts to work with 50Hz or 60Hz supplies between 100-240 VAC
- 8 DC outputs with a combined total power consumption of 480W
- Provide both DC & AC overload protection



**PD-4A**  
Redundant Power Center

- Two AC power supplies,
- Supply energy even if one power source fails
- Output : 3 x 5A + 2 x 10A 12V XLR DC Female
- Built-in time delay power-on control to initiate each DC output terminal



**PD-2A**  
Power Center

- Combine up-to 10 power supplies into a single power connection
- Output connections: 4 x 3A + 2 x 5A + 2 x 10A 12V XLR DC



**DDC-4012H**  
DC to DC 12/7.2V 4.0A Converter

- Automatically accepts input voltages between 15 and 50V DC to provide regulated 7.2/8.4/ 12V DC output depending on its output switch setting
- Max power output 48W / 4A
- Options for either 4pin XLR or 5.5mm PSU type output connections



СОВЕТЫ И РЕКОМЕНДАЦИИ ПО ВЫБОРУ ПУТИ РЕГИСТРАЦИИ  
**РЕГИСТРАЦИЯ ОТКРЫТА**  
REGISTRATION IS OPENED  
17.09.2012

МЕЖДУНАРОДНАЯ КОНФЕРЕНЦИЯ  
ПРИЧЕРНОМОРСКОЕ ЗЕРНО И МАСТИЧНЫЕ  
2012/13

МЕЖДУНАРОДНАЯ КОНФЕРЕНЦИЯ  
ПРИЧЕРНОМОРСКОЕ ЗЕРНО И МАСТИЧНЫЕ  
2012/13

ХІІІ МЕЖДУНАРОДНАЯ КОНФЕРЕНЦИЯ  
ПРИЧЕРНОМОРСКОЕ ЗЕРНО И МАСТИЧНЫЕ  
2012/13

Агропромышленное страхование

# ALL IN ONE CABLES



**CB-22H**  
HD/SD 30m 4-in-1 Cable  
(HD-SDI/ITC/CV/DC Power)



**CB-23H**  
HD/SD 50m 4-in-1 Cable  
(HD-SDI/ITC/CV/DC Power)



**CB-24**  
SD 100m 3-in-1 Cable  
(SDI/ITC/CVBS)



**CB-30**  
HD/SD 30m 4-in-1 Cable for Multi-  
Camera Control  
(HD-SDI/ITC/CV/Cat-5)



**CB-31**  
HD/SD 50m 4-in-1 Cable  
for Multi-Camera Control  
(HD-SDI/ITC/CV/Cat-5)



**CB-47**  
HD/SD 50m 2-in-1 Cable  
(HD-SDI/ITC)



**CB-61**  
HDMI Active Optical Cable - 50m



**CB-62**  
HDMI Active Optical Cable - 100m

# datavideo

www.datavideo.com



@DatavideoUSA  
@DatavideoEMEA  
@DatavideoTaiwan  
@DatavideoAsia  
@DatavideoIndia2016  
@Datavideojapan  
@DatavideoAustralia



@Datavideo  
@Datavideo\_EMEA  
@Datavideo\_Taiwan  
@datavideoasia  
@datavideo\_malaysia  
@datavideoindia



@DatavideoUSA  
@DVTWDVCN



@DatavideoUSA  
@DatavideoEurope

---

#### Disclaimers of Product and Services

This brochure is intended as a guide only. We reserve the right to change specifications and availability without prior notice. While we strive for complete accuracy, be aware that it may contain errors and omissions. Prior to purchase, please check with your local Datavideo office or authorised distributor.